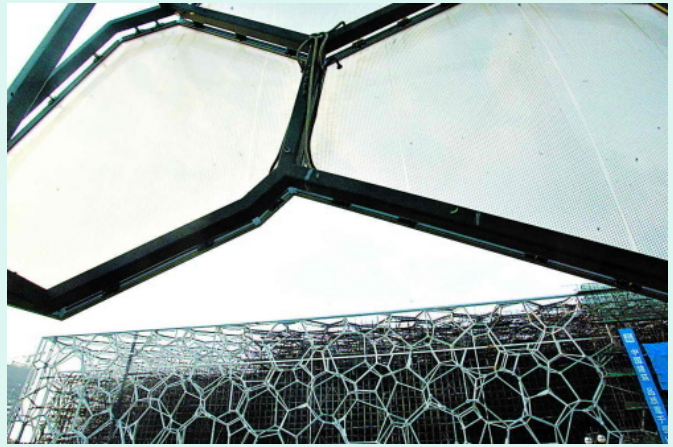
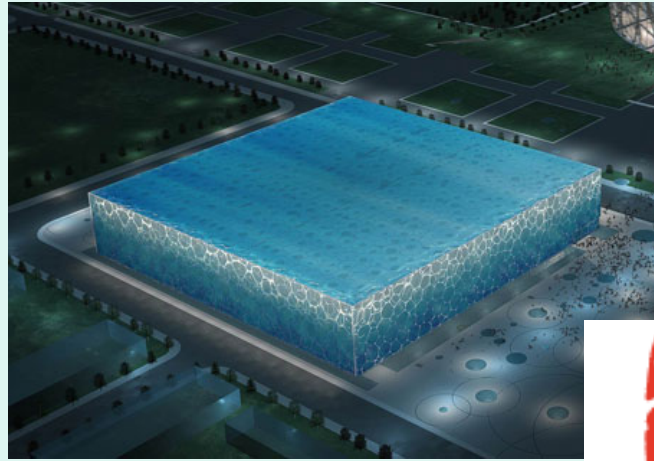
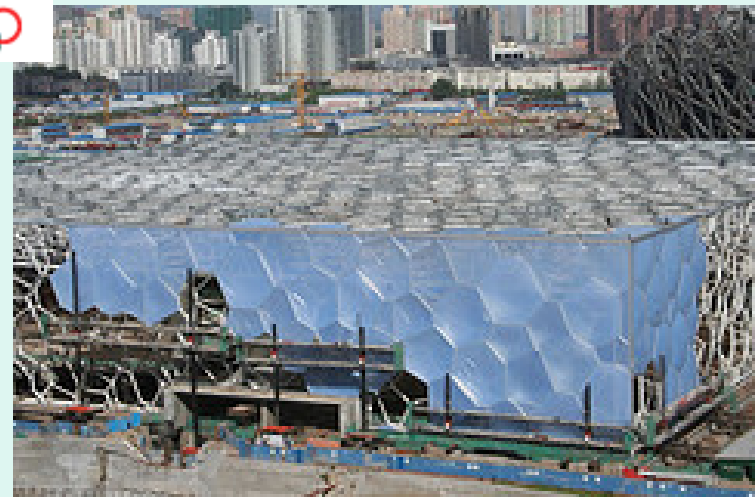
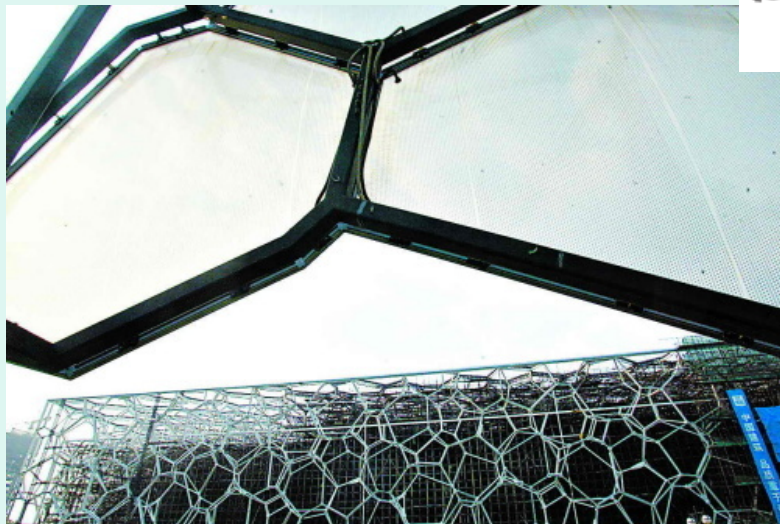


Change of scale: Beijing 2008 Olympic Aquatic Centre



... based on a foam structure discovered²
by TCD physicists in 1993!

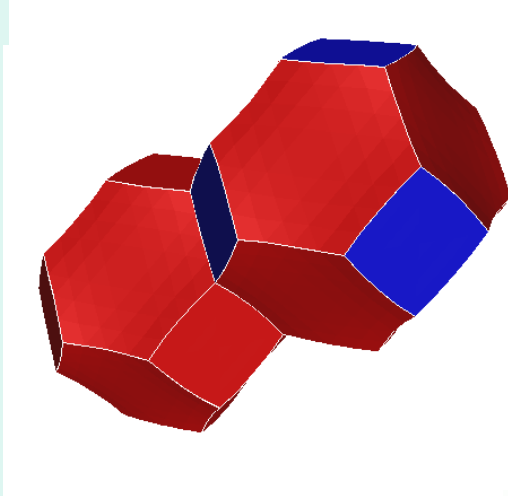


Back to the Beijing Olympics: Crystalline foams

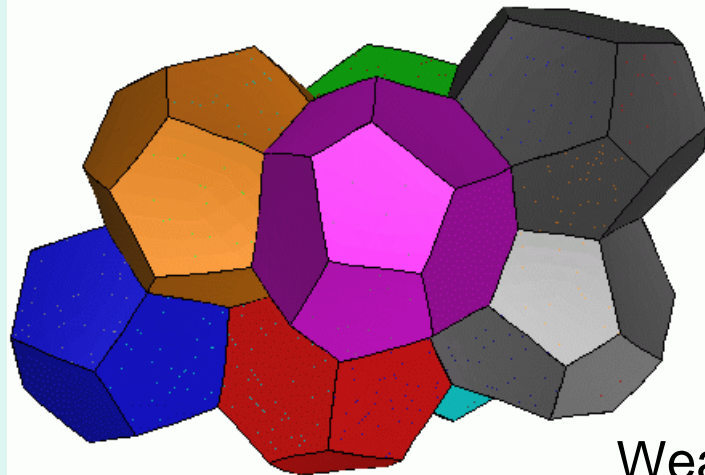


Professor Denis Weaire inspects the interior of the Water Cube in Beijing.

Ideal structure for monodisperse dry foam?



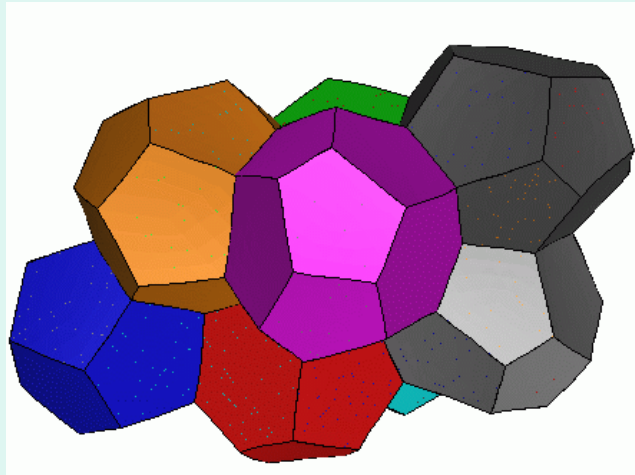
Kelvin structure (1887)



Weaire-Phelan structure (1993)

Beijing Olympics 2008 Aquatic Centre (WaterCube)

based on the **Weaire-Phelan foam structure**, discovered in TCD in 1994



<http://www.flickr.com/search/?q=water>